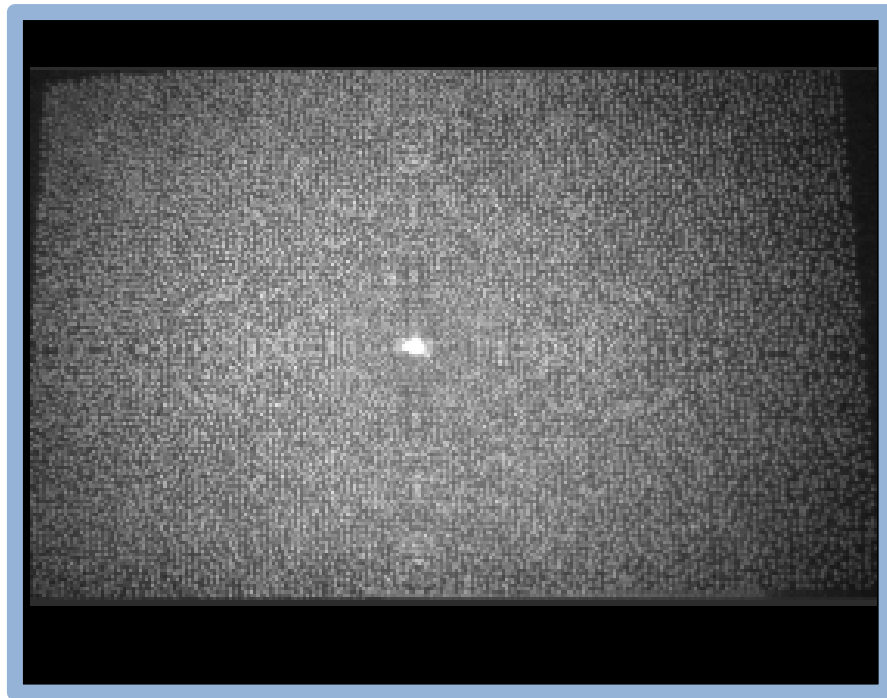


Diffractive Optical Element

1DRMM3.20002



Part number	1DRMM3.20002
Wavelength	850nm
Description	12357 dots
FOV (HxV)	57x42 degree
Active area	5x5 mm
Substrate	GLASS, PC, PET
Applications	3D recognition/ measurement / scanning
Remark	For collimated single point laser