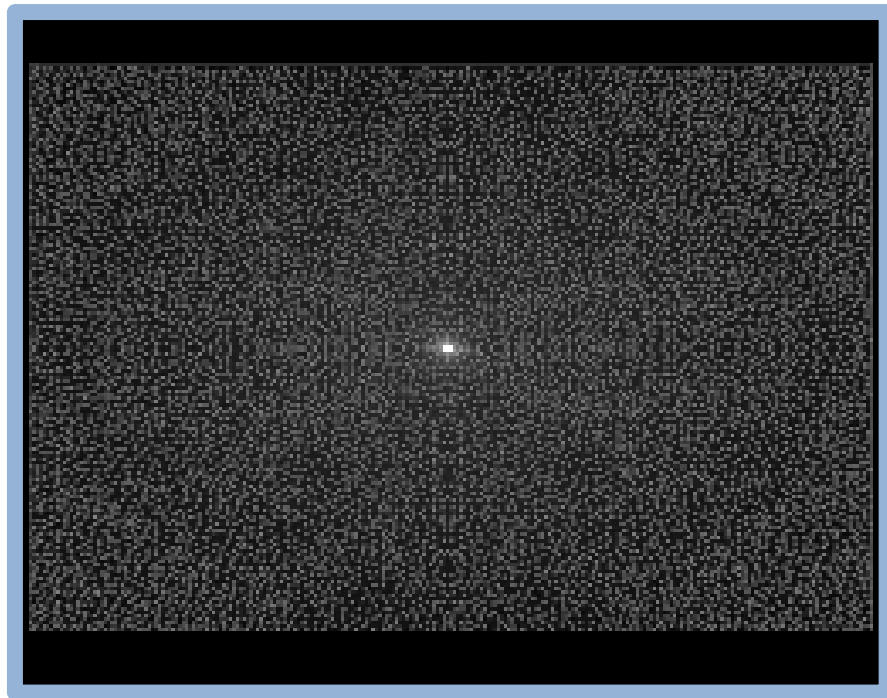


Diffractive Optical Element

1DRM68530004



Part number	1DRM68530004
Wavelength	940nm
Description	10001 dots
FOV (HxV)	68*53.7 degree
Active area	4.3x4.3 mm
Substrate	GLASS, PC, PET
Applications	3D recognition / measurement / scanning
Remark	For collimated single point laser