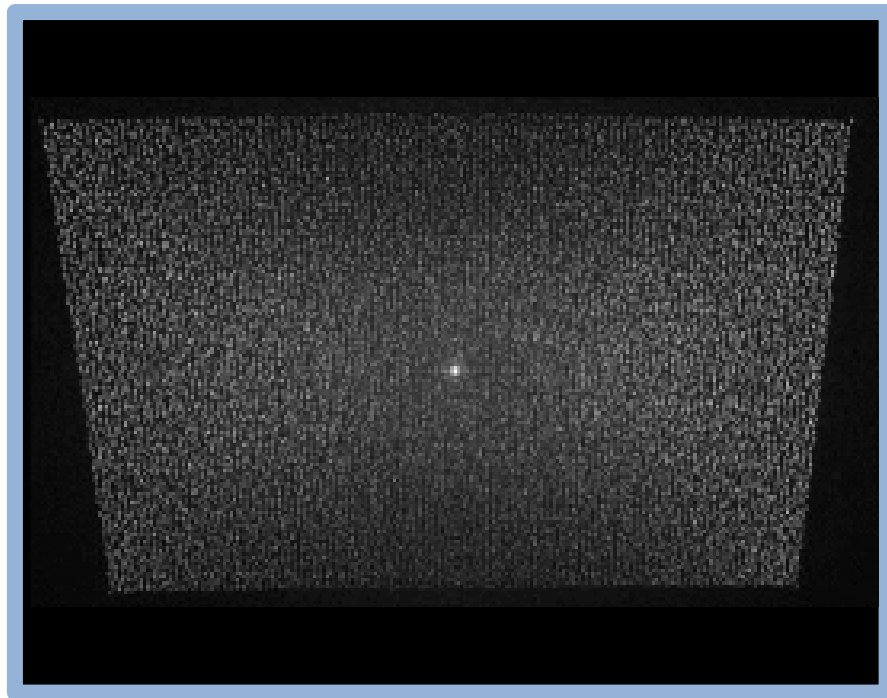


Diffractive Optical Element

1DRMVERO0001



Part number	1DRMVERO0001
Wavelength	825nm
Description	11912 dots
FOV (HxV)	63.3x40 degree
Active area	5x5 mm
Substrate	GLASS, PC, PET
Applications	3D recognition/ measurement / scanning
Remark	For collimated single point laser